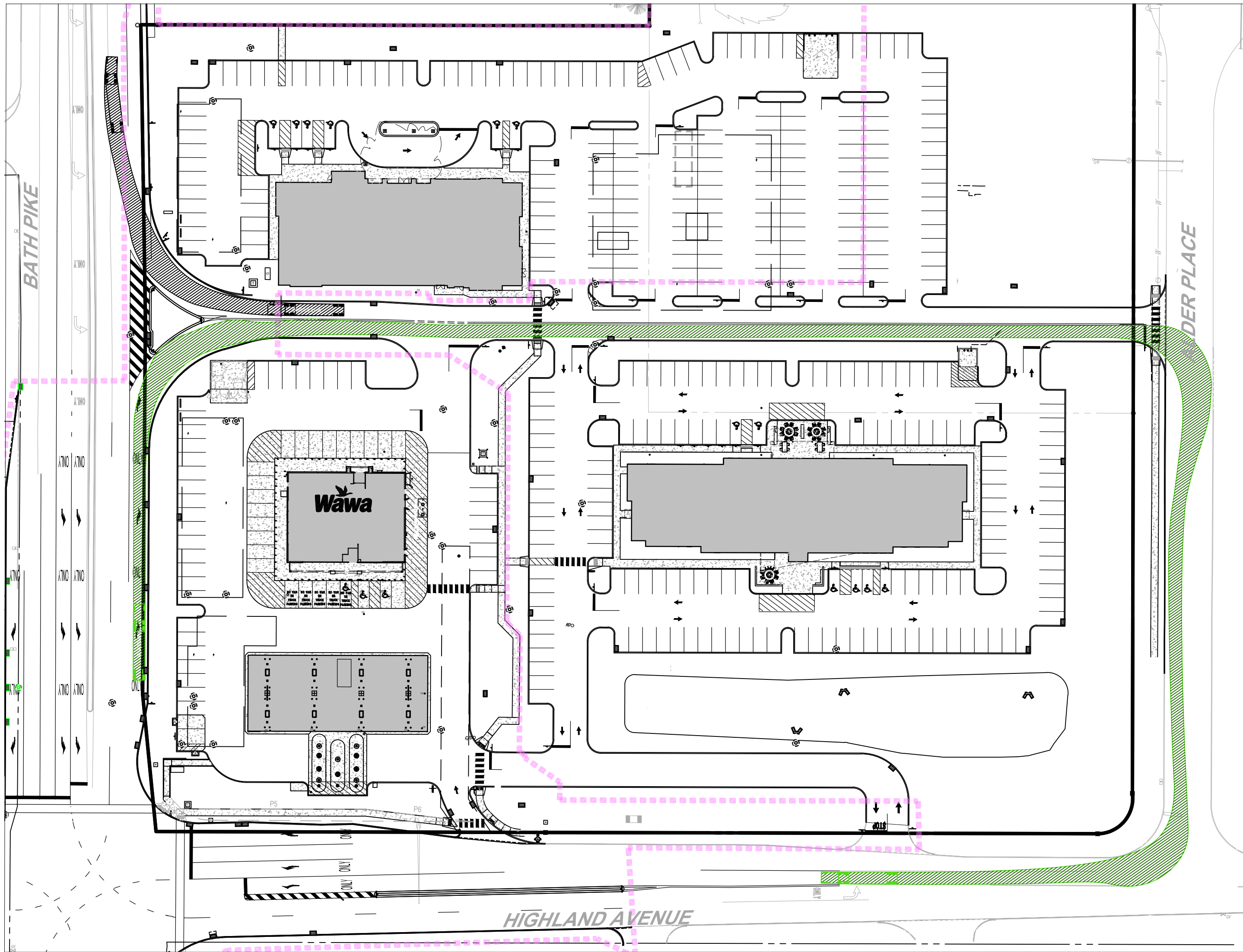
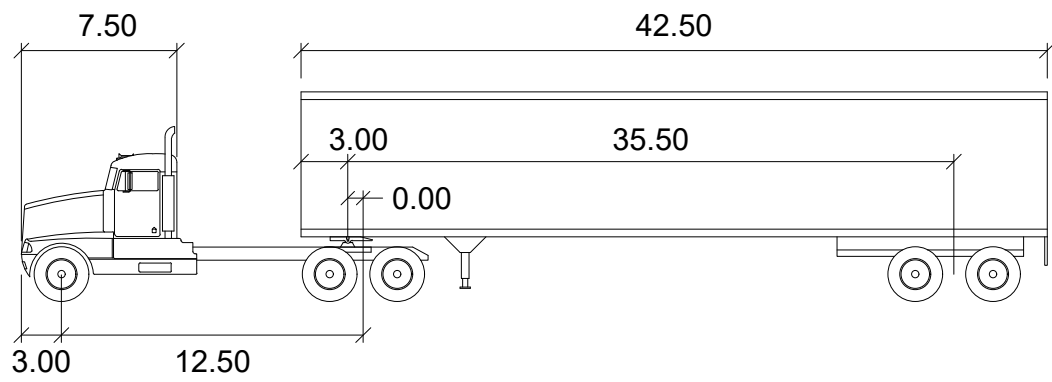




R:\2020\202000\DRAWINGS\PLAN SETS\AMENDED LAND DEVELOPMENT\REVISION 2\202000-SPP-2-LAYOUT C-302 TRUCK TURN

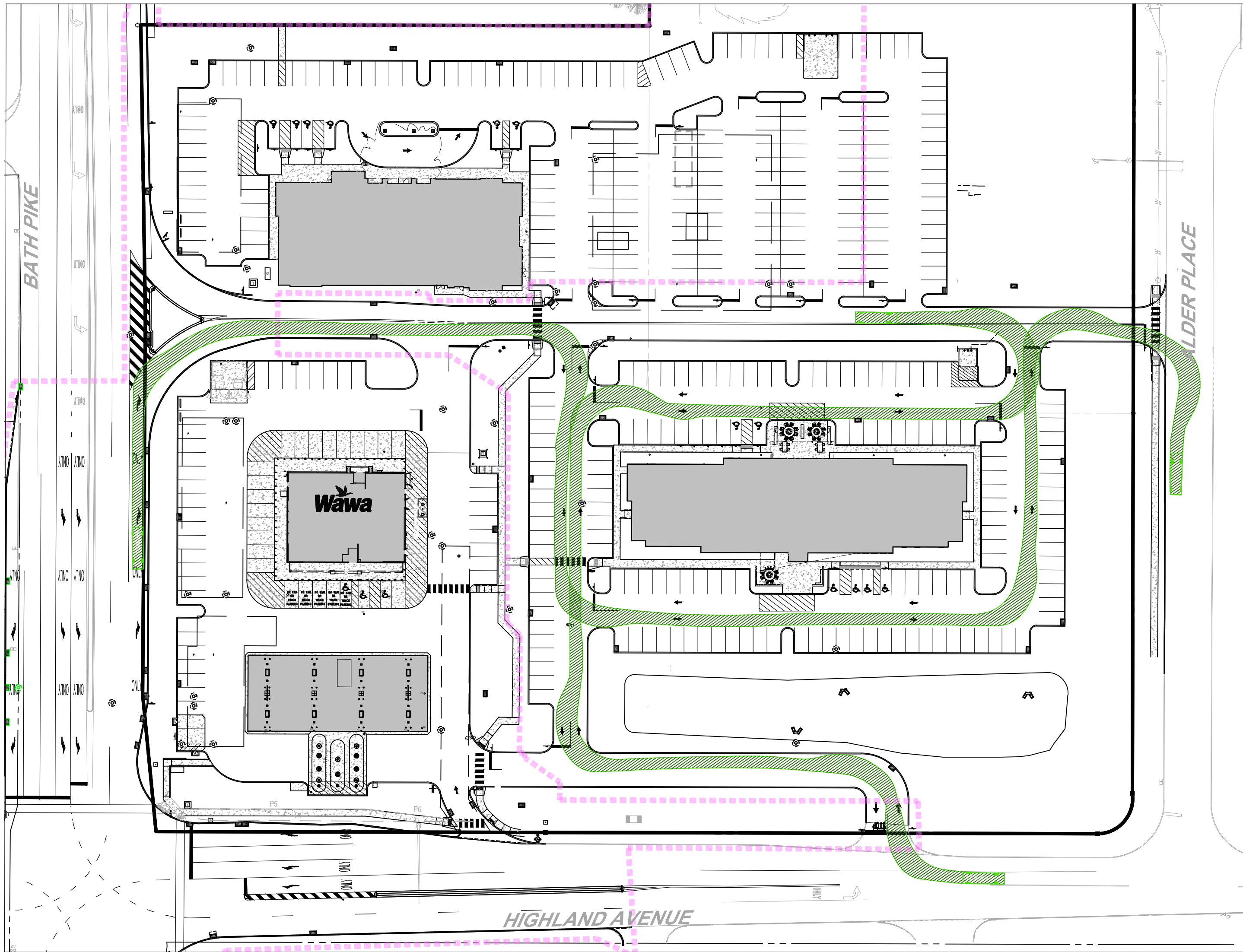


WB-50 TURNING TEMPLATE
SCALE: 1" = 60'

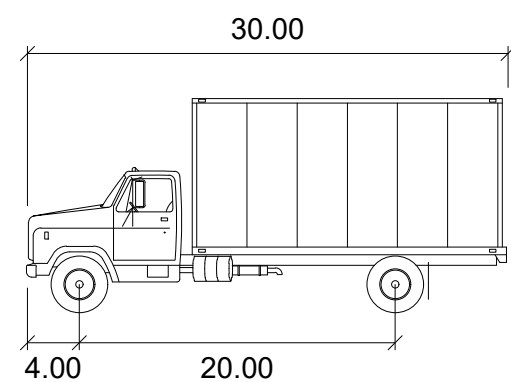


WB-50

| | | | |
|---------------|--------|--------------------|--------|
| | feet | | |
| Tractor Width | : 8.00 | Lock to Lock Time | : 6.0 |
| Trailer Width | : 8.50 | Steering Angle | : 17.7 |
| Tractor Track | : 8.00 | Articulating Angle | : 70.0 |
| Trailer Track | : 8.50 | | |



SU-30 TURNING TEMPLATE
SCALE: 1" = 60'



SU-30

| | |
|-------------------|--------|
| | feet |
| Width | : 8.00 |
| Track | : 8.00 |
| Lock to Lock Time | : 6.0 |
| Steering Angle | : 31.8 |



BOHLER 
SITE CIVIL AND CONSULTING ENGINEERING
PROGRAM MANAGEMENT
LANDSCAPE ARCHITECTURE
SUSTAINABLE DESIGN
PERMITTING SERVICES
TRANSPORTATION SERVICES

THIS DRAWING IS THE PROPERTY OF BOHLER & ASSOCIATES, INC. AND IS NOT TO BE REPRODUCED OR USED IN ANY MANNER WITHOUT THE WRITTEN PERMISSION OF BOHLER & ASSOCIATES, INC. ANY REPRODUCTION OR USE WITHOUT THE WRITTEN PERMISSION OF BOHLER & ASSOCIATES, INC. IS STRICTLY PROHIBITED.

REVISIONS

| REV | DATE | COMMENT | CHECKED BY | DRAWN BY |
|-----|-----------|-----------------|------------|----------|
| 1 | 8/12/2025 | NPDES MAJOR MOD | TRA | JAB |
| 2 | 9/12/2025 | TWPL/VPC/NPDES | TRA | JAB |



811
Know what's below.
Call before you dig.
PENNSYLVANIA
YOU MUST CALL 811 BEFORE ANY EXCAVATION
WHETHER IT'S ON PRIVATE OR PUBLIC LAND.
1-800-242-1776
www.811call.org
20201250906

ISSUED FOR MUNICIPAL &
AGENCY REVIEW & APPROVAL

THIS DRAWING IS INTENDED FOR MUNICIPAL AND/OR AGENCY
REVIEW AND APPROVAL. IT IS NOT INTENDED AS A CONSTRUCTION
DOCUMENT UNLESS INDICATED OTHERWISE.

PROJECT No.: PY202000
DRAWN BY: TRAVIN
CHECKED BY: JAB
DATE: 8/5/2025
CAD ID: PY202000-SPP-2

PROJECT: **AMENDED
PRELIMINARY /
RECORD LAND
DEVELOPMENT
PLANS**
FOR

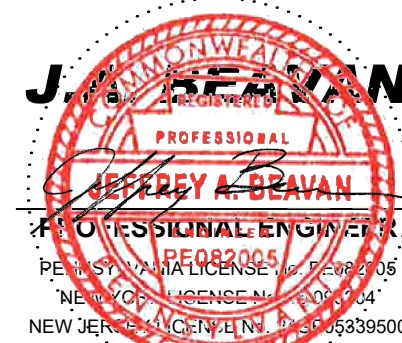
JAINDL LAND
COMPANY

PROPOSED COMMERCIAL
DEVELOPMENT

ROUTE 512 & HIGHLAND AVE.
HANOVER TOWNSHIP
NORTHAMPTON COUNTY
PENNSYLVANIA 18017

BOHLER 

74 W BROAD STREET, SUITE 500
BETHLEHEM, PA 18018
Phone: (610) 709-9971
Fax: (610) 709-9976
www.BohlerEngineering.com



SHEET TITLE:

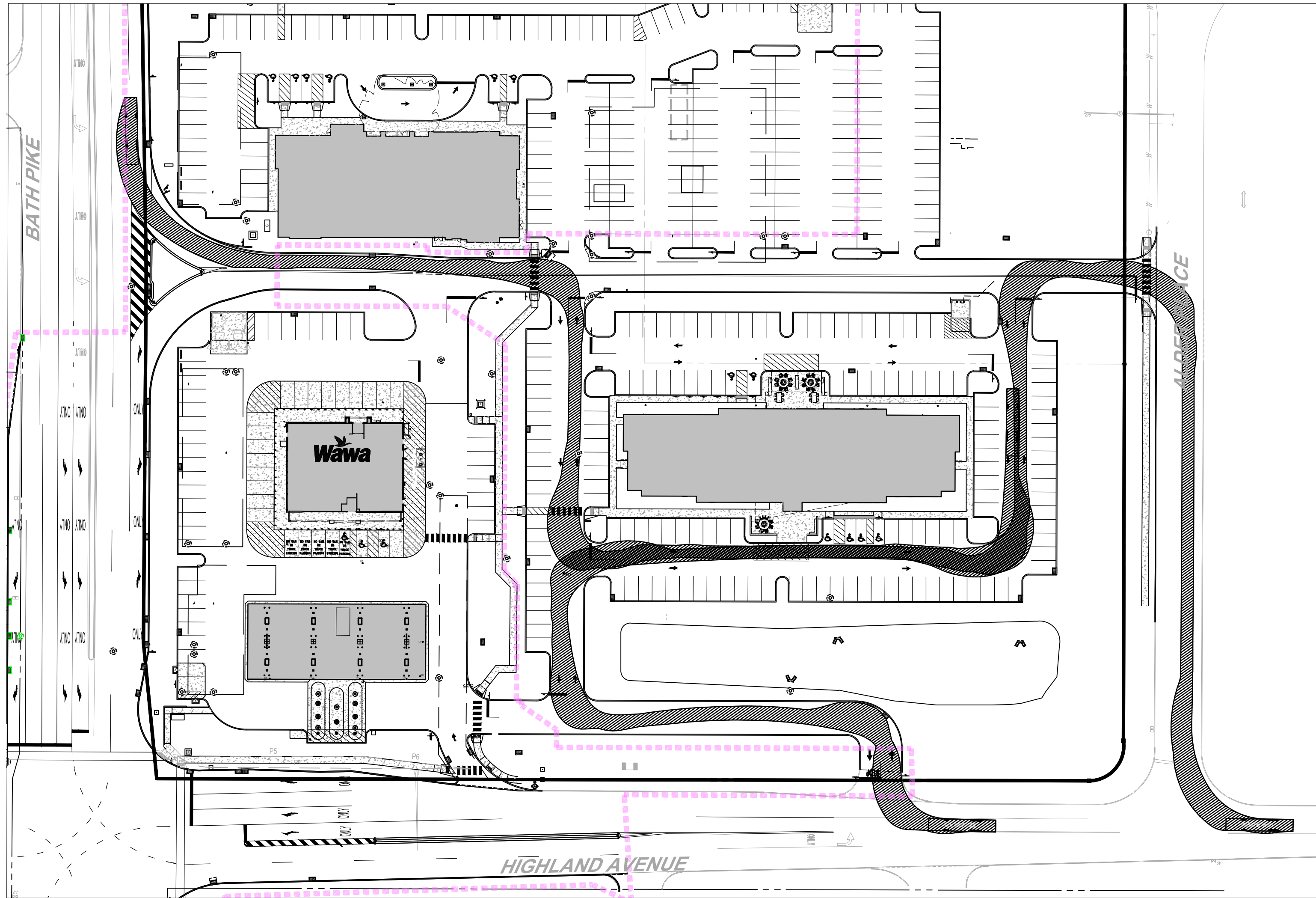
**TRUCK
TURNING PLAN**

SHEET NUMBER:

C-302
5 OF 36

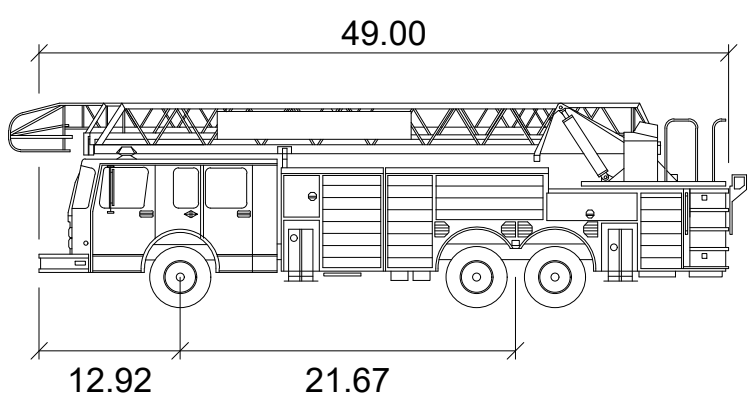
REVISION 2 - 9/12/2025

R:\00\202000\DRAWINGS\PLAN SETS\AMENDED LAND DEVELOPMENT\REVISION 2\PY202000-SPP-2-PLAN LAYOUT C-303 TRUCK TURN



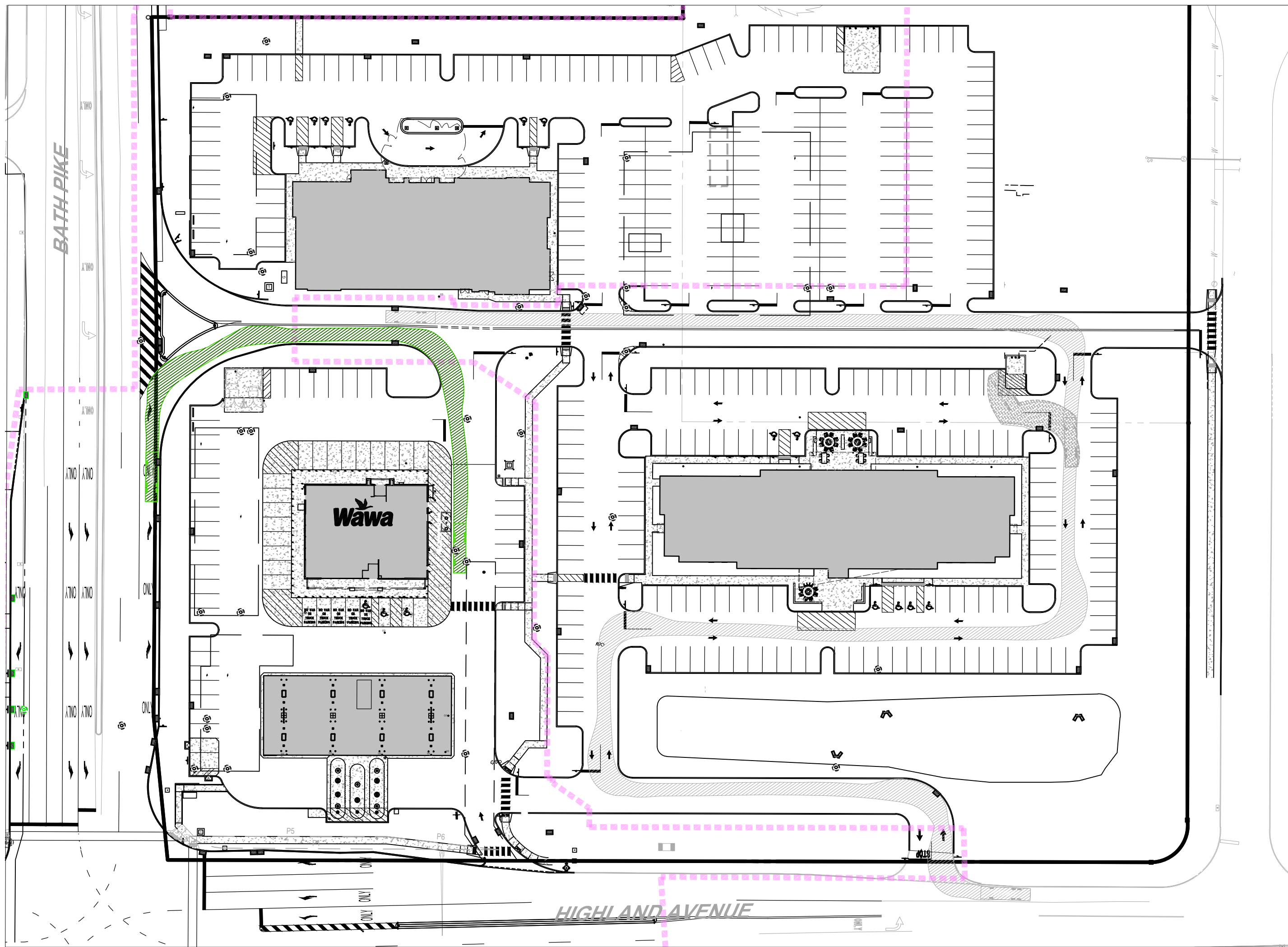
HANOVER TOWNSHIP FIRE TRUCK TURNING TEMPLATE

SCALE: 1" = 60'



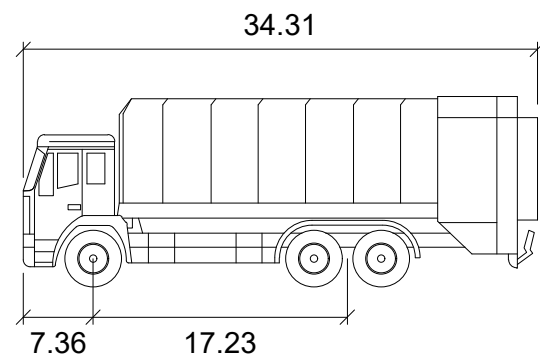
Hanover Township Fire Truck

| | |
|-------------------|--------|
| | feet |
| Width | : 8.67 |
| Track | : 8.25 |
| Lock to Lock Time | : 6.0 |
| Steering Angle | : 40.0 |



REFUSE TRUCK TURNING TEMPLATE

SCALE: 1" = 60'



Refuse - Commercial

| | |
|-------------------|--------|
| | feet |
| Width | : 8.50 |
| Track | : 7.50 |
| Lock to Lock Time | : 6.0 |
| Steering Angle | : 40.0 |



BOHLER

SITE CIVIL AND CONSULTING ENGINEERING
PROGRAM MANAGEMENT
LANDSCAPE ARCHITECTURE
SUSTAINABLE DESIGN
PERMITTING SERVICES
TRANSPORTATION SERVICES

REVISIONS

| REV | DATE | COMMENT | DRAWN BY |
|-----|-----------|-----------------|----------|
| 1 | 8/12/2025 | NPDES MAJOR MOD | TRA |
| 2 | 9/12/2025 | TWP/LVPC/NPDES | TRA |



YOU MUST CALL 811 BEFORE ANY EXCAVATION
WHETHER IT'S ON PRIVATE OR PUBLIC LAND.
1-800-242-1776
www.811.org
20201250906

ISSUED FOR MUNICIPAL &
AGENCY REVIEW & APPROVAL

THIS DRAWING IS INTENDED FOR MUNICIPAL AND/OR AGENCY
REVIEW AND APPROVAL. IT IS NOT INTENDED AS A CONSTRUCTION
DOCUMENT UNLESS INDICATED OTHERWISE.

PROJECT No.: PY202000
DRAWN BY: TRAVIN
CHECKED BY: JAB
DATE: 8/5/2025
CAD ID: PY202000-SPP-2

PROJECT: **AMENDED
PRELIMINARY /
RECORD LAND
DEVELOPMENT
PLANS**
FOR

JAINDL LAND
COMPANY

PROPOSED COMMERCIAL
DEVELOPMENT

ROUTE 512 & HIGHLAND AVE.
HANOVER TOWNSHIP
NORTHAMPTON COUNTY
PENNSYLVANIA 18017

BOHLER

74 W BROAD STREET, SUITE 500
BETHLEHEM, PA 18018
Phone: (610) 709-9971
Fax: (610) 709-9976
www.BohlerEngineering.com



SHEET TITLE:

**TRUCK
TURNING PLAN**

SHEET NUMBER:

C-303

6 OF 36

REVISION 2 - 9/12/2025



GENERAL NOTES:

1. THIS PLAN IS TO BE UTILIZED FOR LANDSCAPE PURPOSES ONLY.
2. ALL DISTURBED UNPAVED AREAS, EXCLUDING PLANTING BEDS, ARE TO BE INSTALLED AS SOODES LAWN IN ACCORDANCE WITH LANDSCAPE SPECIFICATION 4.2.C., UNLESS OTHERWISE STATED ON THIS PLAN.
3. CONTRACTOR TO PROVIDE AN IRRIGATION DESIGN FOR BOTH LAWN AND BED AREAS. DESIGN IS TO BE SUBMITTED TO THE PROJECT LANDSCAPE ARCHITECT FOR REVIEW AND APPROVAL. CONTRACTOR ALSO MUST PROVIDE A LETTER OF ANY PRESSURE REDUCING DEVICES REQUIRED TO MEET MAXIMUM PRESSURE REQUIREMENT.
4. ALL LANDSCAPE BEDS THAT ARE NOT ASSOCIATED WITH A STORMWATER FACILITY ARE TO BE INSTALLED WITH WEED BARRIER FABRIC (SEE DETAIL).
5. WITHOUT EXCEPTION, WEED BARRIER FABRIC SHALL NOT BE USED AT THE BOTTOM OR SIDE SLOPES OF STORMWATER BMP FACILITIES.
6. SHRUBS PLANTED ABOVE HEAD-IN PARKING STALLS SHALL BE INSTALLED TO ALLOW A CLEARANCE OF FIVE FEET FROM FACE OF CURB TO ALLOW FOR BUMPER OVERHANG.
7. WHEN APPLICABLE, CENTER OF PROPOSED ORNAMENTAL, OR EVERGREEN TREE SHALL BE OFFSET 6" FROM THE BACK OF RETAINING WALL (1" FOR SHADE TREES) TO PREVENT WALL FAILURE. FINAL PLANTING LOCATIONS SHALL BE COORDINATED WITH THE WALL DESIGNER.

| PLANT SCHEDULE WAWA LEASE AREA | | | | | | |
|--------------------------------|-----|---|--------------------------------------|-------------|-----------|--|
| CODE | QTY | BOTANICAL NAME | COMMON NAME | SIZE | CONTAINER | |
| CANOPY TREES | | | | | | |
| CCA | 3 | CARPINUS CAROLINIANA | AMERICAN HORNBEAM | 2 5" CAL | B&B | |
| GBP | 3 | GINKGO BILOBA 'PRINCETON SENTRY' | PRINCETON SENTRY MAIDENHAIR TREE | 2 5" CAL | B&B | |
| LSR | 1 | LIQUIDAMBAR STYRACIFLUA 'ROTUNDILOBA' | ROUND-LOBED SEEDLESS SWEET GUM | 2 5" CAL | B&B | |
| QPH | 3 | QUERCUS PHELLOS | WILLOW OAK | 2 5" CAL | B&B | |
| ORNAMENTAL TREES | | | | | | |
| AGA | 1 | AMELANCHIER X GRANDIFLORA 'AUTUMN BRILLIANCE' | AUTUMN BRILLIANCE APPLE SERVICEBERRY | 8-10" | B&B | |
| MDW | 3 | MALUS X DONALD WYMAN | DONALD WYMAN CRAB APPLE | 2 5" CAL | B&B | |
| SHRUBS | | | | | | |
| JHC | 29 | JUNIPERUS CHINENSIS 'HETZI COLUMNARIS' | COLUMNAR HETZ JUNIPER | 4 5" | B&B | |
| JHB | 3 | JUNIPERUS HORIZONTALIS 'MOENB' | ICE BLUE JUNIPER | 15-18" SPRD | CONTAINER | |
| YR | 10 | YBURNUM RHYTIDOPHYLLUM | LEATHERLEAF YBURNUM | 4 5" | B&B | |

*PLANTS IN THIS SCHEDULE ALSO ACCOUNTED FOR IN OVERALL PLANT SCHEDULE